



## 102/8-9 Harvey Place Toongabbie NSW

2  2  1 

Presenting this spacious 2-bedroom apartment with pride, conveniently located in the heart of Toongabbie. This residence offers a lifestyle of convenience and low maintenance, with a short walk to Toongabbie Train Station, local shops, eateries, schools, parks, and medical centers. Additionally, it's just a short drive to the vibrant Parramatta CBD and the Westmead medical and educational precinct.

### Features:

- + Modern interiors with a generous open-plan lounge area leading to the balcony with a green outlook overlooking the community park.
- + Two good-sized bedrooms with built-in wardrobes, including one spacious ensuite.

[For full version visit the website](https://www.neptunefn.com.au)

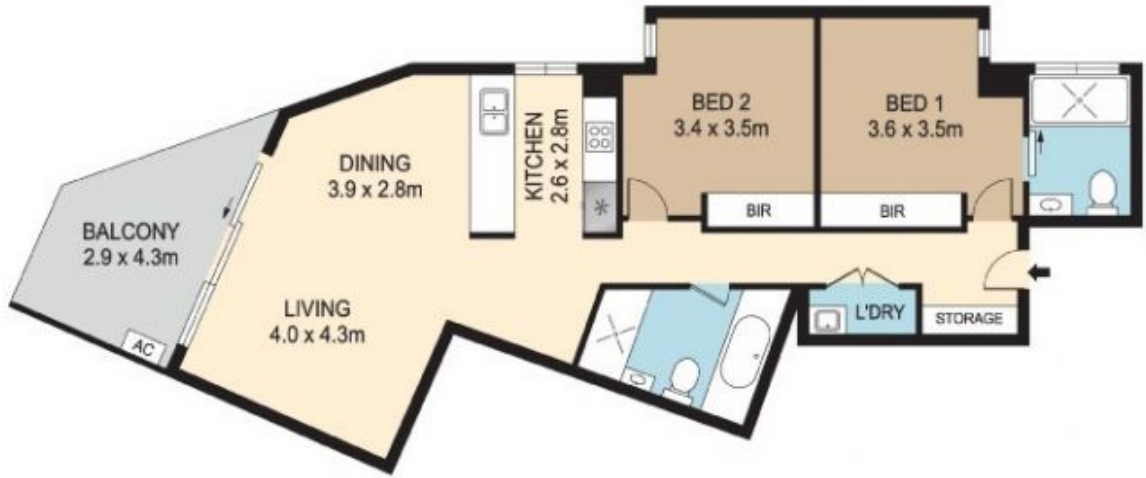
**Type** : Apartment  
**Price** : \$480,000 Fixed Price!  
**Building Size** : 102 sqm  
**Land Size** : 102 sqm  
**View** : <https://www.neptunefn.com.au/8190282>



**Vikas Saluja**  
02 8610 5777



**Tanmay Goswami**  
02 8610 5777



## 102/8-9 HARVEY PLACE, TOONGABBIE

DISCLAIMER : PLANS SHOWN ARE FOR MARKETING PURPOSES ONLY. ALL DIMENSIONS ARE APPROXIMATE AND NOT TO SCALE. THEY ARE SUBJECT TO ERRORS AND INACCURACIES AND NO LIABILITY WILL BE ACCEPTED. INTERESTED PARTIES SHOULD MAKE THEIR OWN INQUIRES.

